

Stedham Road Map to Success

Geography

Rabbits Class (Many of these progression points are seen in multiple units of work, we have assigned them to the most relevant part of the road map)

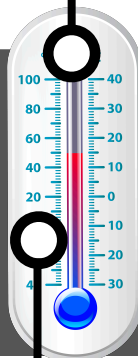
understand geographical similarities and differences through studying the human and physical geography of a small area of the United Kingdom, and of a small area in a contrasting non-European country

use world maps, atlases and globes to identify the United Kingdom and its countries, as well as the countries, continents and oceans studied at this key stage

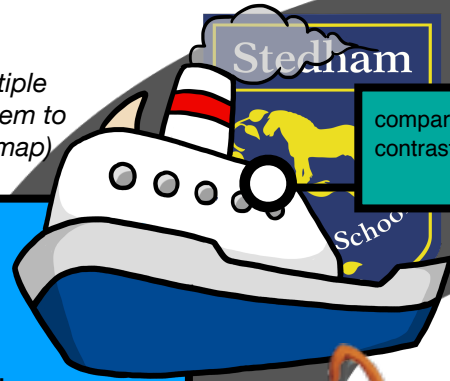
use simple compass directions (North, South, East and West) and locational and directional language [for example, near and far; left and right], to describe the location of features and routes on a map

identify seasonal and daily weather patterns in the United Kingdom and the location of hot and cold areas of the world in relation to the Equator and the North and South Poles

identify seasonal and daily weather patterns in the United Kingdom and the location of hot and cold areas of the world in relation to the Equator and the North and South Poles



identify seasonal and daily weather patterns in the United Kingdom and the location of hot and cold areas of the world in relation to the Equator and the North and South Poles;



What's left to Explore?

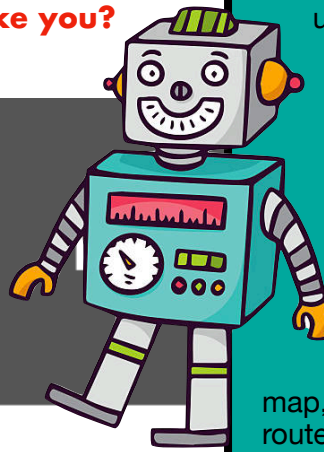
compare a local city/town in the UK with a contrasting city/town in a different country

What will be the next dinosaur?

name and locate the world's seven continents and five oceans



Where will your imagination take you?



use simple compass directions and locational and directional to describe the location of features and routes on a map;

use key vocabulary to demonstrate knowledge and understanding in this strand: compass, 4-point, direction, North, East, South, West, plan, record, observe, aerial view, key, map, symbols, direction, position, route, journey, the UK, changes, tally chart, pictogram, world map, country, continent, human, physical

Home or Away

use simple fieldwork and observational skills to study the geography of the surrounding area, including key human and physical features, using a range of methods



use basic geographical vocabulary to refer to key physical features, including: beach, cliff, coast, forest, hill, mountain, sea, ocean, river, soil, valley, vegetation, season and weather

How do we live happily ever after?



use world maps, atlases and globes to identify the countries, continents and oceans studied at this key stage

use basic geographical vocabulary to refer to key human features, including: city, town, village, factory, farm, house, office, port, harbour and shop

Can you survive in the wild?

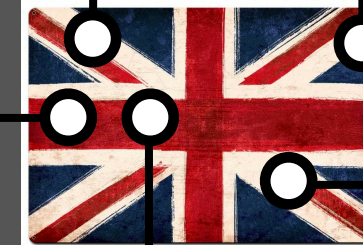


compare the UK with a contrasting country in the world;

use key vocabulary to demonstrate knowledge and understanding in this strand: South America, London, Brasilia, compare, capital city, China, Asia, country, population, weather, similarities, differences, farming, culture, Africa, Kenya, Nairobi, river, desert, volcano

use key vocabulary to demonstrate knowledge and understanding in this strand: United Kingdom, England, Scotland, Wales, Northern Ireland, town, city, village, sea, beach, hill, mountain, London, Belfast, Cardiff, Edinburgh, capital city, world map, continent, ocean, Europe, Africa, Asia, Australasia, North America, South America, Antarctica

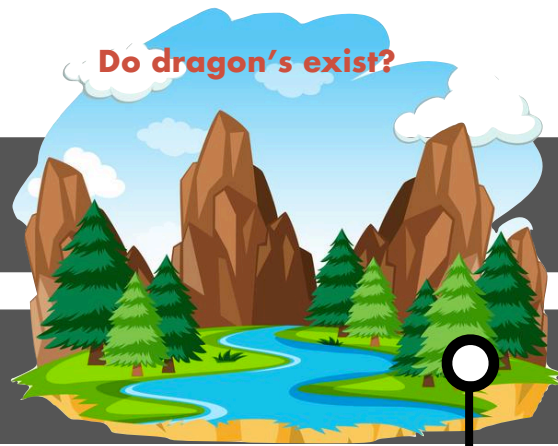
What comes with great power?



key human features, including: city, town, village, factory, farm, house, office, port, harbour and shop

use aerial photographs and plan perspectives to recognise landmarks and basic human and physical features; devise a simple map; and use and construct basic symbols in a key

Is conflict necessary?



use basic geographical vocabulary to refer to: key physical features, including: beach, cliff, coast, forest, hill, mountain, sea, ocean, river, soil, valley, vegetation, season and weather



Do dragon's exist?

use simple compass directions and locational and directional to describe the location of features and routes on a map

devise a simple map; and use and construct basic symbols in a key

- Locational Knowledge
- Place Knowledge
- Human and Physical Geography
- Geographical Skills and Fieldwork